

ROLLING OAKS MEDICAL CENTER

375 & 415 ROLLING OAKS DR., THOUSAND OAKS, CA
www.thousandoaksmedicaloffice.com

Main Entrance Lobby
and Common Areas
**UNDERGOING
RENOVATIONS**
(Almost completed)

CLASS "A" MEDICAL OFFICE SPACE FOR LEASE
WITHIN 250,000 SQFT MEDICAL OFFICE CAMPUS

Eric Nishimoto
D 818.444.4984
enishimoto@lee-re.com
DRE# 01462339

Scott Silverstein
D 818.223.4391
ssilverstein@lee-re.com
DRE# 00877034

Lee & Associates® LA North/Ventura, Inc.

Corp ID #01191898 - A Member of the Lee & Associates Group of Companies - 5707 Corsa Avenue., Suite 200 - Westlake Village, CA 91362
No warranty or representation is made to the accuracy of the foregoing information. Terms of sale or lease and availability are subject to change or withdrawal without notice.

 **LEE &
ASSOCIATES**
COMMERCIAL REAL ESTATE SERVICES

ROLLING OAKS MEDICAL CENTER

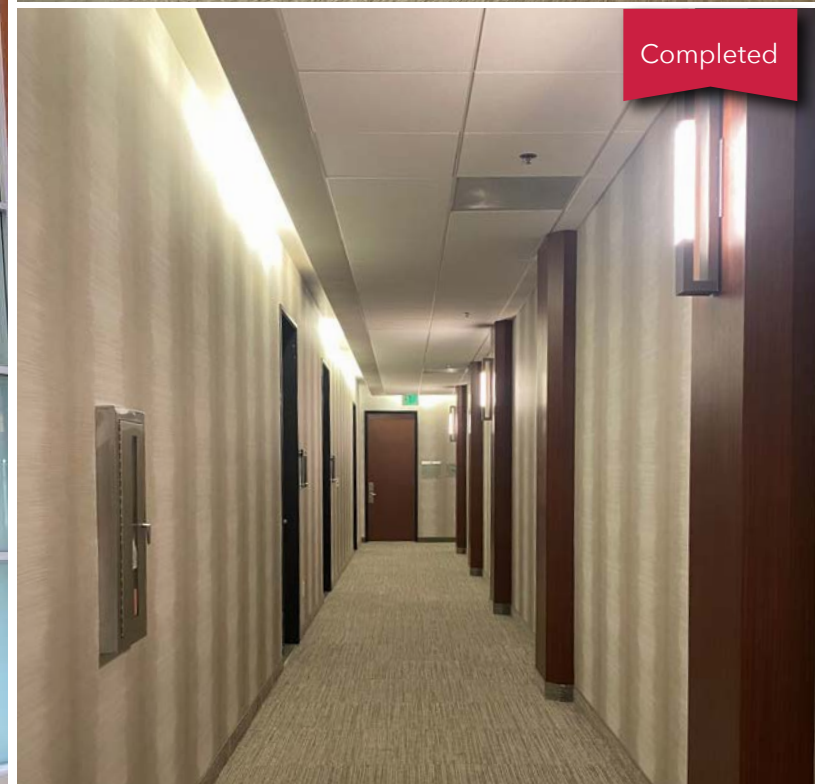
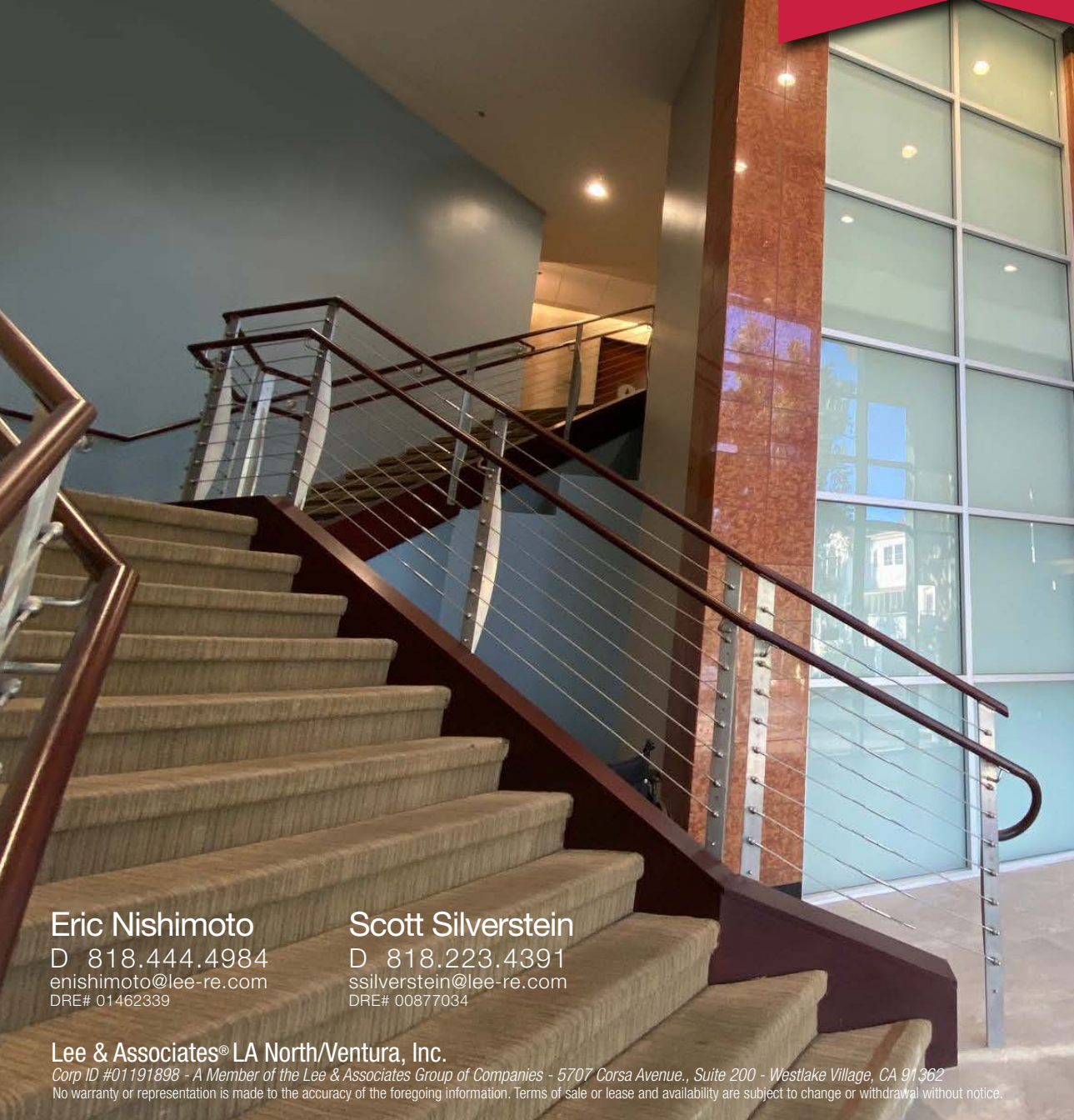
375 & 415 ROLLING OAKS DR., THOUSAND OAKS, CA

www.thousandoaksmedicaloffice.com

Main Entrance Lobby
and Common Areas
**UNDERGOING
RENOVATIONS**
(Almost completed)



Completed



Completed

Eric Nishimoto
D 818.444.4984
enishimoto@lee-re.com
DRE# 01462339

Scott Silverstein
D 818.223.4391
ssilverstein@lee-re.com
DRE# 00877034

Lee & Associates® LA North/Ventura, Inc.

Corp ID #01191898 - A Member of the Lee & Associates Group of Companies - 5707 Corsa Avenue., Suite 200 - Westlake Village, CA 91362
No warranty or representation is made to the accuracy of the foregoing information. Terms of sale or lease and availability are subject to change or withdrawal without notice.

LEE & ASSOCIATES
COMMERCIAL REAL ESTATE SERVICES

ROLLING OAKS MEDICAL CENTER

375 & 415 ROLLING OAKS DR., THOUSAND OAKS, CA

www.thousandoaksmedicaloffice.com



Eric Nishimoto
D 818.444.4984
enishimoto@lee-re.com
DRE# 01462339

Scott Silverstein
D 818.223.4391
ssilverstein@lee-re.com
DRE# 00877034

Lee & Associates® LA North/Ventura, Inc.

Corp. ID #01191898 - A Member of the Lee & Associates Group of Companies - 5707 Corsa Avenue., Suite 200 - Westlake Village, CA 91362

No warranty or representation is made to the accuracy of the foregoing information. Terms of sale or lease and availability are subject to change or withdrawal without notice.







 **LEE &
ASSOCIATES**
COMMERCIAL REAL ESTATE SERVICES

ROLLING OAKS MEDICAL CENTER

375 & 415 ROLLING OAKS DR., THOUSAND OAKS, CA

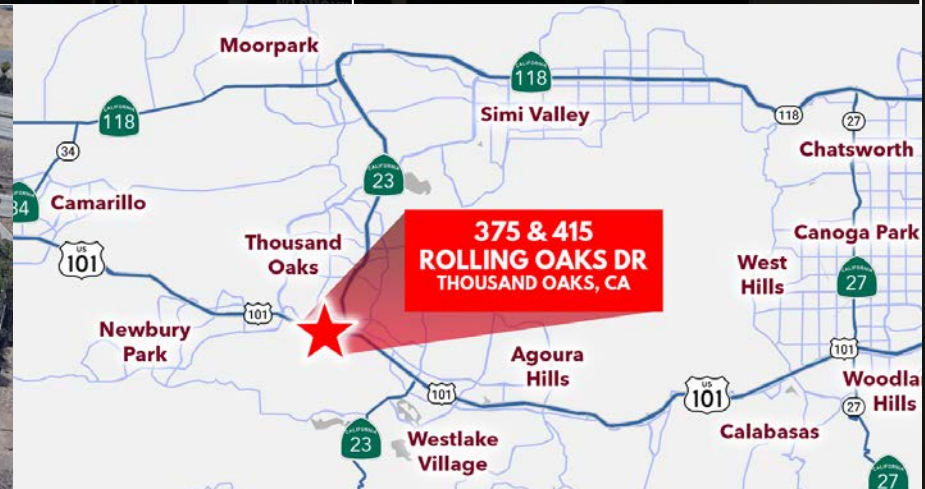
www.thousandoaksmedicaloffice.com

PROPERTY HIGHLIGHTS

-  GREAT LOCATION NEAR THE THOUSAND OAKS SURGICAL HOSPITAL (TOSH)
-  CLASS "A" MEDICAL SPACE
-  MULTIPLE SUITES AVAILABLE
-  PARKING GARAGE AND SURFACE STALLS
-  EXCELLENT ACCESS TO VENTURA 101 FREEWAY
-  PRIDE OF OWNERSHIP

AVAILABILITY

AVAILABLE	1,504 SF - 6,992 SF
POSSESSION	Contact Agents
TERM	3-10 Years
RATE	\$3.15 SF
TI ALLOWANCE	Negotiable
LEASE TYPE	Modified Gross + Electrical & Janitorial
PARKING	5/1,000 USF with Subterranean Parking Available



Eric Nishimoto
D 818.444.4984
enishimoto@lee-re.com
DRE# 01462339

Scott Silverstein
D 818.223.4391
ssilverstein@lee-re.com
DRE# 00877034

Lee & Associates® LA North/Ventura, Inc.

Corp ID #01191898 - A Member of the Lee & Associates Group of Companies - 5707 Corsa Avenue., Suite 200 - Westlake Village, CA 91362

No warranty or representation is made to the accuracy of the foregoing information. Terms of sale or lease and availability are subject to change or withdrawal without notice.

LEE & ASSOCIATES
COMMERCIAL REAL ESTATE SERVICES

ROLLING OAKS MEDICAL CENTER

375 & 415 ROLLING OAKS DR., THOUSAND OAKS, CA

www.thousandoaksmedicaloffice.com



Eric Nishimoto
D 818.444.4984
enishimoto@lee-re.com
DRE# 01462339

Scott Silverstein
D 818.223.4391
ssilverstein@lee-re.com
DRE# 00877034

Lee & Associates® LA North/Ventura, Inc.

Corp ID #01191898 - A Member of the Lee & Associates Group of Companies - 5707 Corsa Avenue., Suite 200 - Westlake Village, CA 91362
No warranty or representation is made to the accuracy of the foregoing information. Terms of sale or lease and availability are subject to change or withdrawal without notice.

LEE & ASSOCIATES
COMMERCIAL REAL ESTATE SERVICES

ROLLING OAKS MEDICAL CENTER

375 & 415 ROLLING OAKS DR., THOUSAND OAKS, CA
www.thousandoaksmedicaloffice.com



Eric Nishimoto

D 818.444.4984
enishimoto@lee-re.com
DRE# 01462339



Scott Silverstein

D 818.223.4391
ssilverstein@lee-re.com
DRE# 00877034



Lee & Associates® LA North/Ventura, Inc.

Corp ID #01191898 - A Member of the Lee & Associates Group of Companies
5707 Corsa Ave., Suite 200 - Westlake Village, CA 91362

No warranty or representation is made to the accuracy of the foregoing information.
Terms of sale or lease and availability are subject to change or withdrawal without notice.