

# OFFICE & MEDICAL SPACE AVAILABLE

351 Rolling Oaks Drive, Thousand Oaks, California



**ERIC NISHIMOTO**

818.444.4984

enishimoto@lee-re.com

ericnishimoto-re.com

License ID# 01462339

[www.ericnishimoto-re.com.com](http://www.ericnishimoto-re.com.com)



351 Rolling Oaks Dr, Thousand Oaks, CA

# OFFICE & MEDICAL SPACE AVAILABLE FOR LEASE



## LEASING TERMS

**Office Rate:** \$1.75 per RSF Modified Gross (Janitorial)  
**Medical Rate:** \$2.85 per RSF Modified Gross (Janitorial)  
**Term:** Negotiable  
**Parking:** Free Surface

## AVAILABILITY

Suite #	Size
Suite 101 - Medical	3,026 RSF
Suite 103	2,092 RSF
Suite 202C	1,872 RSF
Suite 203 - Medical	2,143 RSF
Suite 204 - Medical	1,388 RSF
Suite 205 - (contiguous 2,204 RSF)	1,013 RSF
Suite 206 - (contiguous 2,204 RSF)	1,191 RSF
Suite 207/208	2,598 RSF

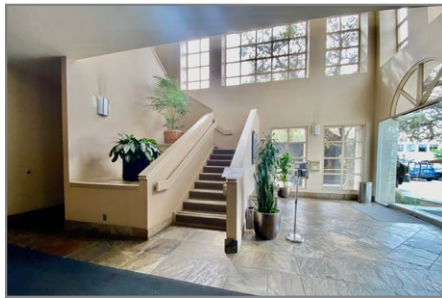
## PROPERTY HIGHLIGHTS

- Management On-Site
- Mix of Professional Office & Medical Tenants
- Flexible Floor Plans Available
- Surface & Reserved Covered Parking
- Convenient Access to 101 Ventura Freeway
- Elevator Served

351 Rolling Oaks Dr, Thousand Oaks, CA

OFFICE & MEDICAL SPACE  
AVAILABLE FOR LEASE

**BUILDING PHOTOS**



351 Rolling Oaks Dr, Thousand Oaks, CA

OFFICE & MEDICAL SPACE  
AVAILABLE FOR LEASE

LOCAL AMENITIES



For more information please contact:

**ERIC NISHIMOTO**  
818.444.4984  
enishimoto@lee-re.com  
ericnishimoto-re.com  
License ID# 01462339



COMMERCIAL REAL ESTATE SERVICES

Lee & Associates® - LA North/Ventura, Inc. • Corporate ID #01191898  
A Member of the Lee & Associates® Group of Companies  
5707 Corsa Ave, Suite 200, Westlake Village, CA 91362 • P:818.223.4388 F:818.591.1450  
www.lee-associates.com

No warranty or representation is made to the accuracy of the foregoing information. Terms of sale or lease and availability are subject to change or withdrawal without notice.